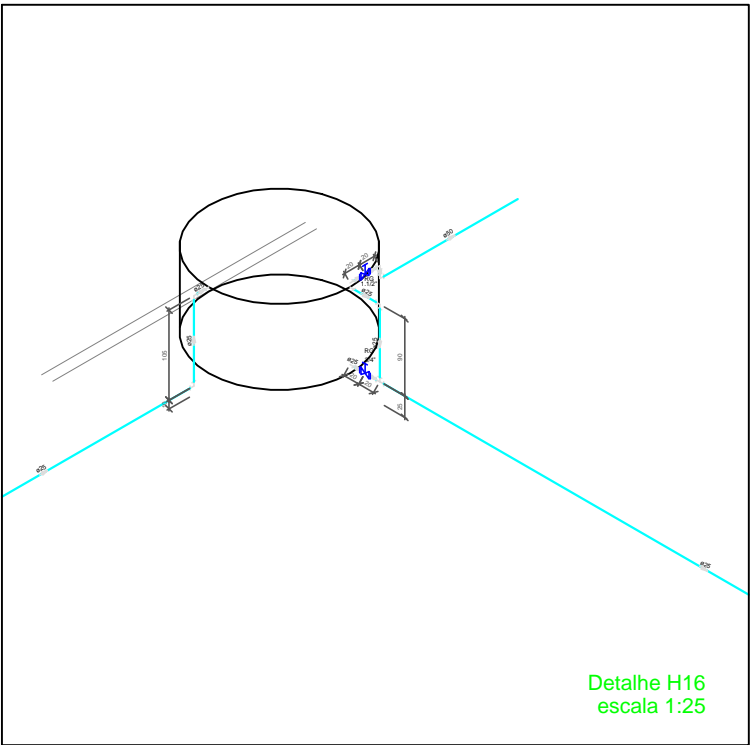
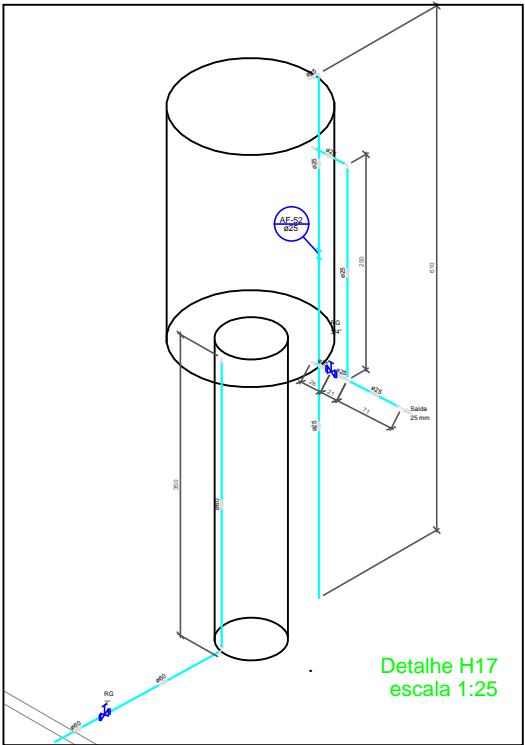


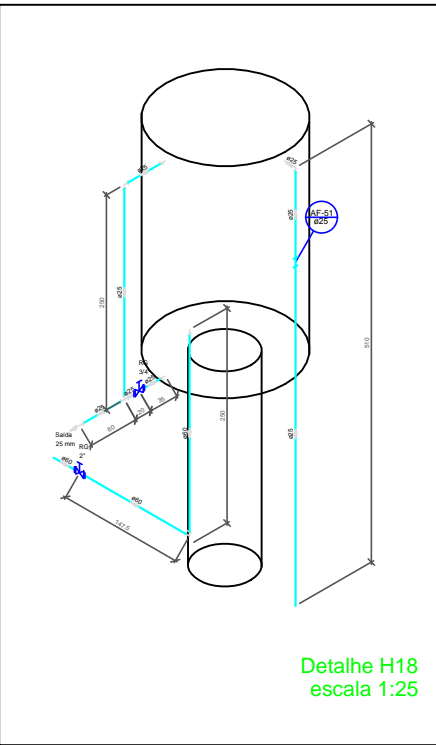
Detalhe H15  
escala 1:25



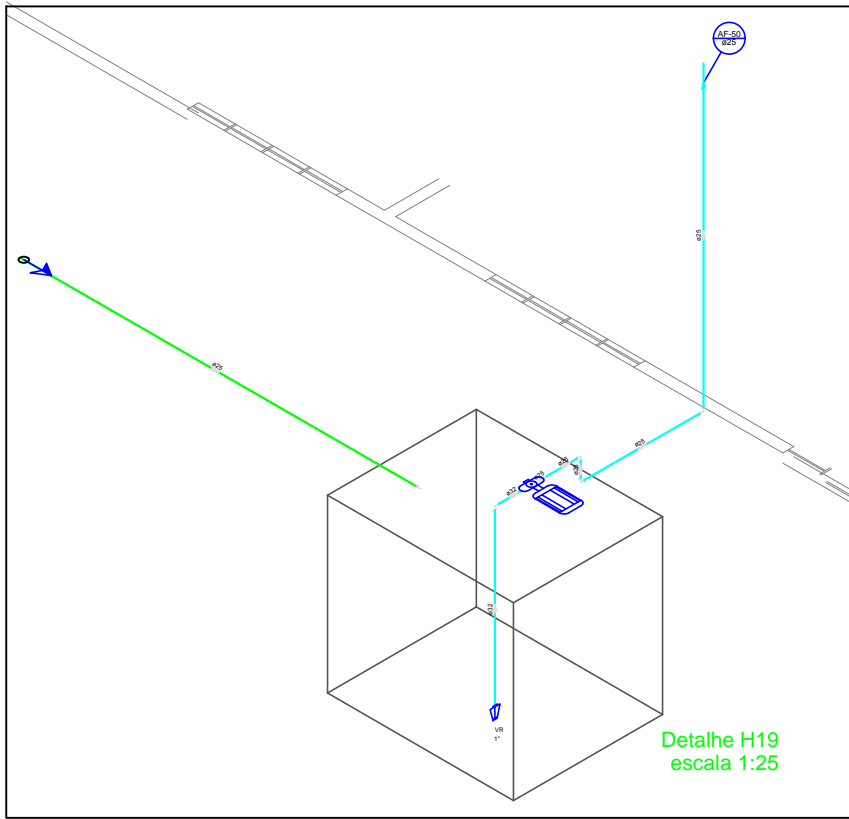
Detalhe H16  
escala 1:25



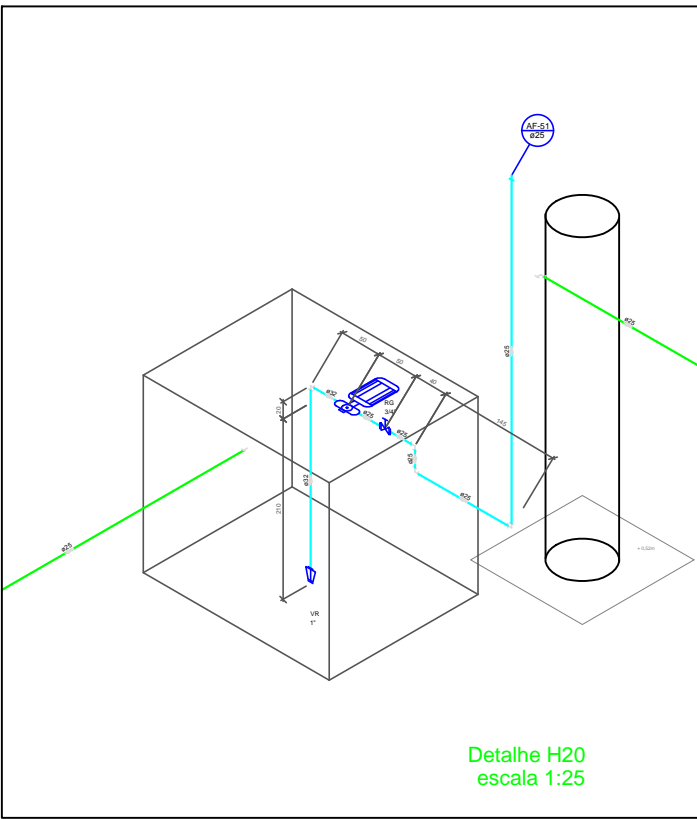
Detalhe H17  
escala 1:25



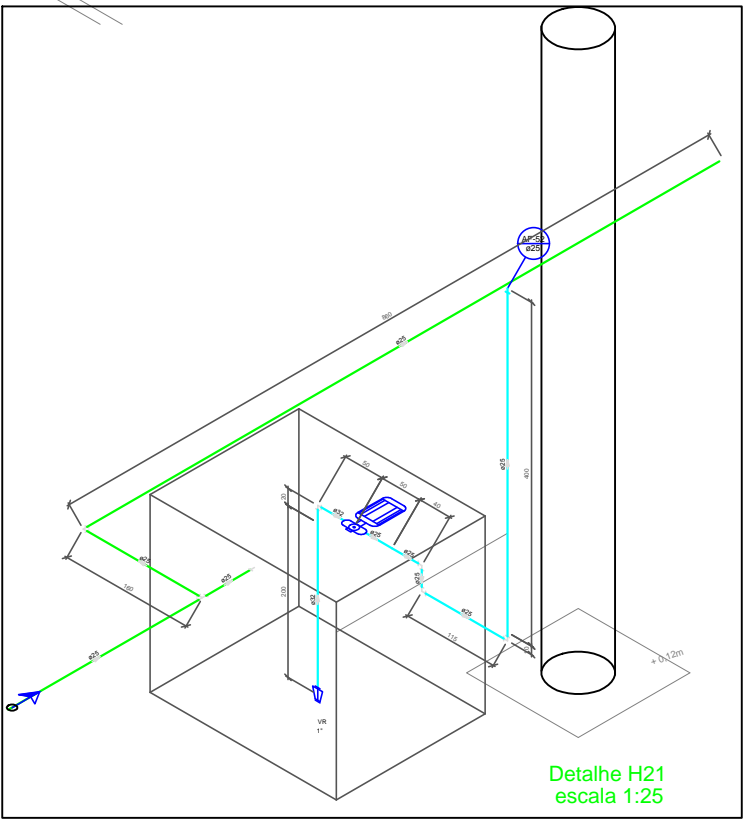
Detalhe H18  
escala 1:25



Detalhe H19  
escala 1:25



Detalhe H20  
escala 1:25



Detalhe H21  
escala 1:25



## PREFEITURA MUNICIPAL DE VÁRZEA GRANDE

Av. Castelo Branco, Espaço Municipal, 2500 - Centro Sul, Várzea Grande /MT  
CEP 78125-700 - FONE/FAX: 65 3688 8000

PROJETO:  
PARQUE BERNECK -  
ADMINISTRATIVO-  
(ÁGUA FRIA)

LOCALIZAÇÃO:  
Cruzamento da Avenida Gal. Couto Magalhães, com Avenida João  
Ponce de Arruda no Município de Várzea Grande  
ASSUNTO:  
ÁGUA FRIA ADMINISTRATIVO  
DETALHE, 15, 16, 17, 18, 19, 20 E 21

AUTOR DO PROJETO:  
FELIPE AUGUSTO TEZOLIN  
CREA-MT N°MT041090

DESENHISTA:  
FELIPE AUGUSTO TEZOLIN

DATA:  
27/08/2018  
ESCALA:  
1/175

FOLHA N°:  
06/09